

KATO

CR-80c

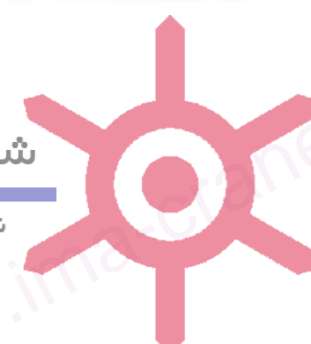
CITYRANGE CRAWLER CRANE

- Maximum rated lifting capacity : 8.0t (360°)
- Maximum boom length : 13.6m



شرکت ایمن مرکزی اروند (ایمن مارکزی) **KATO WORKS CO., LTD.**

نمایندگی رسمی فروش و خدمات پس از فروش
جرثقیل های کاتو و هیتاچی سومیتومو در ایران



Provisional SPECIFICATION

Imen Markazi Arvand

(+98)021 8849-1119

● Performance

| | |
|--|--|
| Maximum rated lifting capacity | 8.00 ton × 2.00 m (360° with outriggers) 3.10 ton × 5.00 m (360° with outriggers) 0.60 ton × 12.5 m (360° with outriggers) 4.60 ton × 2.00 m (360° without outriggers) 2.00 ton × 2.50 m (360° pick & carry) |
| Maximum line pull | 2 ton |
| Maximum working radius | 12.5 m |
| Maximum lifting height | 13.8 m (Boom) |
| Boom length | 4.6 m ~ 13.6 m |
| Travelling speed | 2.3 km/h, 3.7 km/h |
| Gradeability (tan θ) | 0.6 |
| Winch system | Driven by axial plunger type hoisting motor with planetary gear reduction |
| Boom derricking angle | -5° ~ 75° |
| * Boom derricking time | 17 sec. (-5° ~ 75°) |
| * Boom extending time | 27 sec. (4.6 m ~ 13.6 m) |
| * Hoisting line speed (Winding up speed) | 67 m/min. (at 4th layer) |
| Slewing speed | 2.2 min ⁻¹ |

* Speed=Subject to no load

● Mass & dimension

| | |
|----------------------|----------|
| Gross vehicle weight | 9,800 kg |
| Overall length | 5,900 mm |
| Overall width | 2,230 mm |
| Overall height | 2,600 mm |
| Swing radius | 1,810 mm |
| Track shoe width | 450 mm |

● Engine

| | |
|--------------------|---|
| Maker | ISUZU |
| Model | A-4JB1 |
| Type | 4 cycle, water cooled, direct injection |
| Displacement | 2,771 cc |
| Max. power | 42.8 kW at 2200 min ⁻¹ |
| Max. torque | 190.2N·m at 1800 min ⁻¹ |
| Emissions | In accordance with 97/ 68 EC |
| Fuel tank capacity | 110 ℓ |

● Safety devices

| | |
|---------------------|--|
| Safe load indicator | KATO ACS (Automatic Crane Stopper) with working range limit system |
|---------------------|--|

● Standard equipment

| | |
|--|-------------------------------|
| | Steel outrigger pads (4 pads) |
|--|-------------------------------|

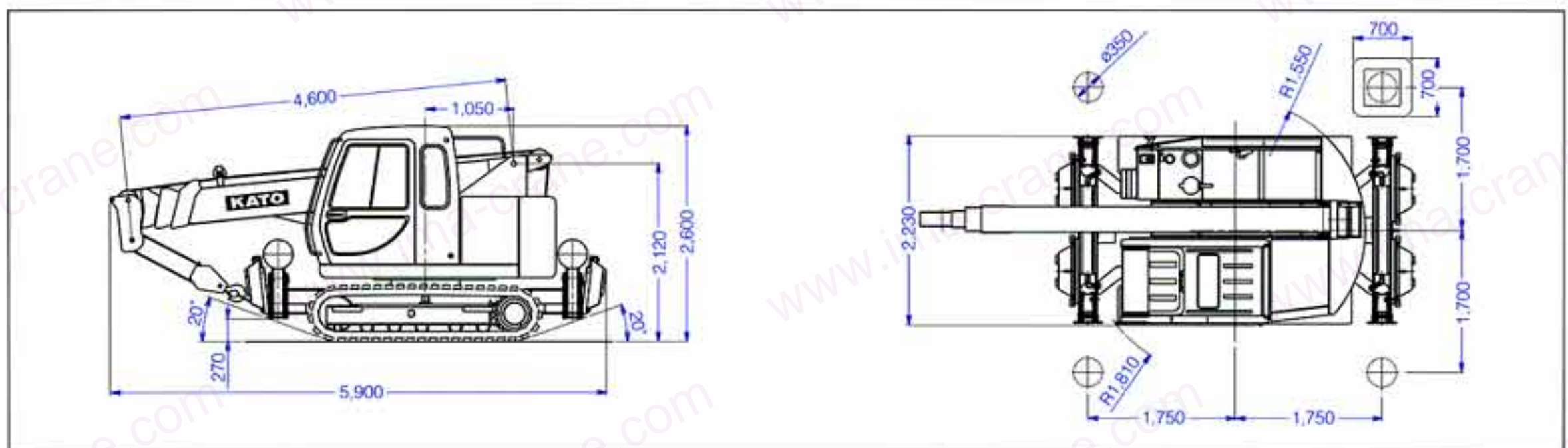
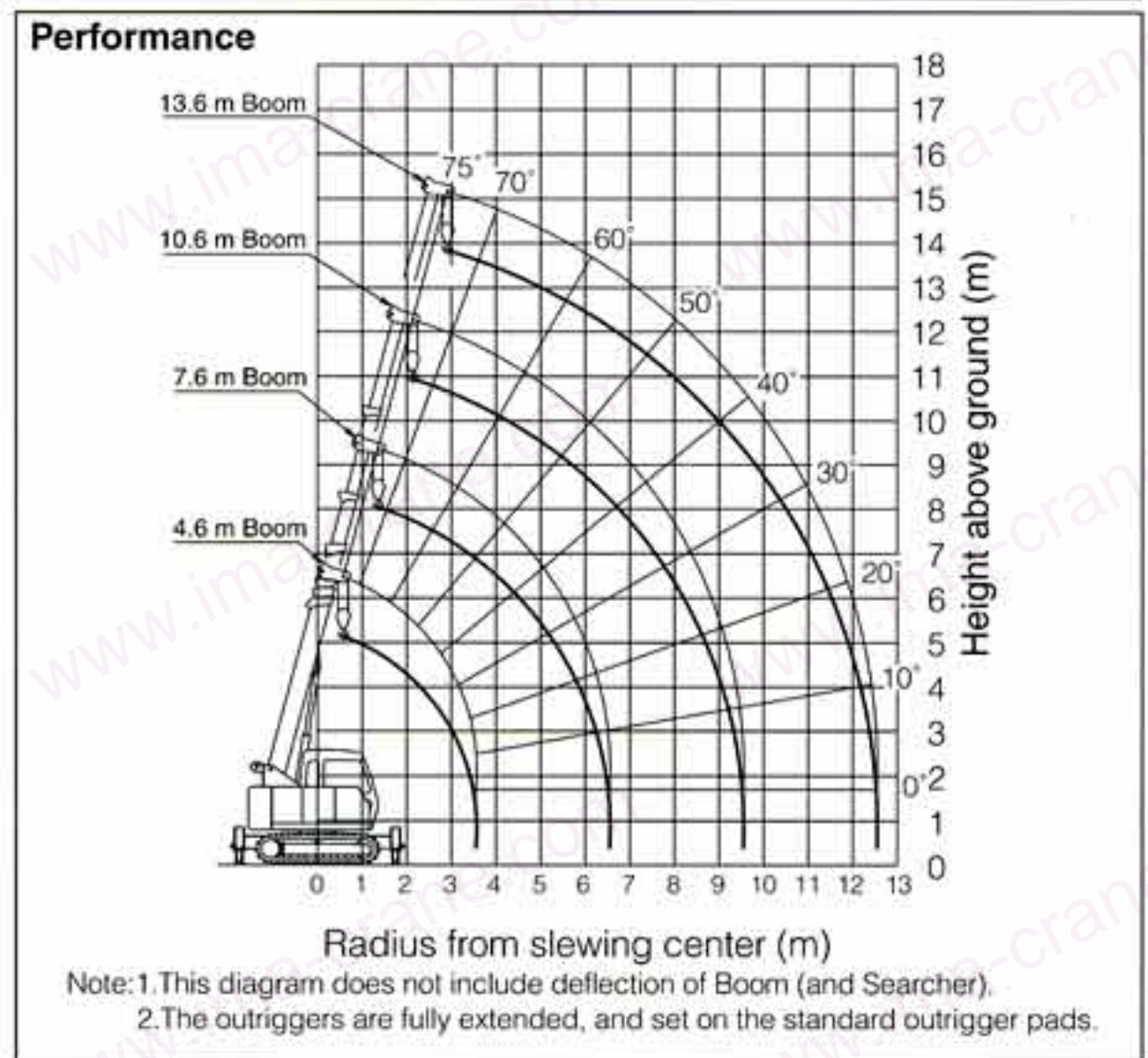
● Optional equipment

| | |
|--|--|
| | <ul style="list-style-type: none"> • Searcher Hook • Cabin heater or air conditioning system • Rubber pads for steel tracks • Radio/Cassette • Beacon |
|--|--|

RATED LIFTING CAPACITY

| BOOM (360° with outriggers) Based on ISO4305 / BS1757:1986 / DIN15019-2 | | | | |
|--|-----------|-----------|------------|------------|
| Working Radius(m) | 4.6m Boom | 7.6m Boom | 10.6m Boom | 13.6m Boom |
| 2.0 | 8.00 | 6.00 | | |
| 2.5 | 6.80 | 5.50 | 4.90 | |
| 3.0 | 5.80 | 5.00 | 4.45 | |
| 3.5 | 5.00 | 4.60 | 4.00 | |
| 4.0 | | 4.20 | 3.65 | 3.00 |
| 4.5 | | 3.75 | 3.40 | 2.60 |
| 5.0 | | 3.10 | 3.00 | 2.40 |
| 5.5 | | 2.65 | 2.65 | 2.10 |
| 6.0 | | 2.30 | 2.30 | 1.90 |
| 6.5 | | 2.00 | 2.00 | 1.70 |
| 7.0 | | | 1.80 | 1.55 |
| 8.0 | | | 1.45 | 1.30 |
| 9.0 | | | 1.20 | 1.10 |
| 9.5 | | | 1.10 | 1.00 |
| 10 | | | | 0.95 |
| 11 | | | | 0.80 |
| 12 | | | | 0.70 |
| 12.5 | | | | 0.60 |
| Standard Hook | | | | 8 ton |
| Hook mass | | | | 85 kg |
| Parts of line | | | | 4 |

WORKING RANGE



*NOTE: KATO products and specifications are subject to improvements and changes without notice.



KATO WORKS CO., LTD.

9-37, Higashi-ohi 1-chome, Shinagawa-ku, Tokyo 140-0011, Japan.

Overseas Marketing Department

Telephone: +81(0)3 3458-1415

Facsimile: +81(0)3 3458-1151

http://www.kato-works.co.jp/

MCR80c 1-1
E350(Hp) Printed in Japan