

# SR-300L

# KATO



# SR-300L

## Rough Terrain Crane

Maximum rated lifting capacity: 30t × 3m  
Maximum boom length: 30.5m  
Engine output: 200kW / 2,600min<sup>-1</sup> (ISO Net)



Address inquiries to :

<http://www.kato-works.co.jp>

NOTE : Illustrations may include optional equipment. KATO products and specifications are subject to improvements and changes without notice.



品質保証の国際規格「ISO 9001」の認証を取得しています。

# KATO

QUALITY & EXPERIENCE  
SINCE 1895

## KATO WORKS CO.,LTD.

9-37, Higashi-ohi 1-chome, Shinagawa-ku, Tokyo 140-0011 Japan.

Tel. : Head Office Tokyo(03)3458-1111

Overseas Marketing Department Tokyo(03)3458-1115

Fax. : Tokyo(03)3458-1163

URL <http://www.kato-works.co.jp>

Innovations For The Future

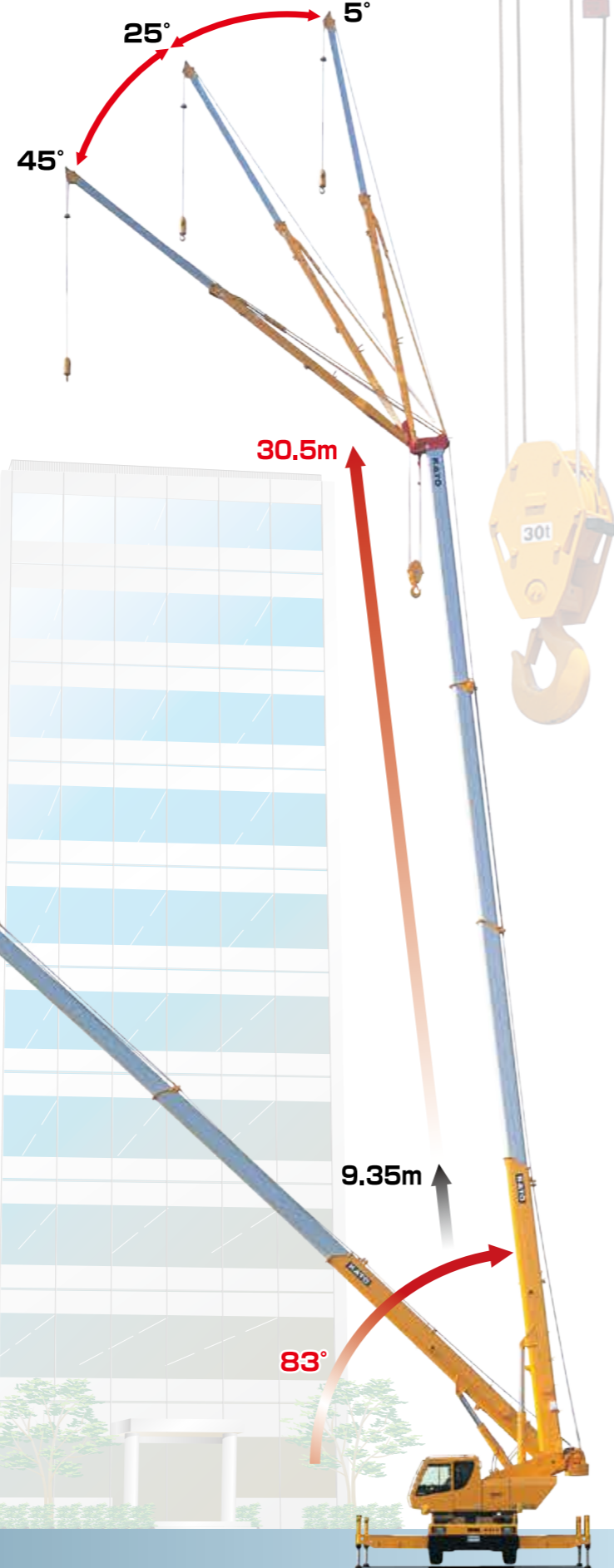
KATO WORKS CO.,LTD.

C03381  
4.2013-1000(AT)1  
4.2014-1000(SY)1-2-1 Printed in Japan

# Powerful & Reliable 4 section round shaped SUPERBOOM

Fully Hydraulic operated solid 30.5m SUPERBOOM combined with 13m Fly-jib offers you wider working ranges and quick erection in narrow spaces

- Maximum Lifting Capacity — 30ton×3.0m
- Boom Length — 9.35m~30.5m
- Boom Derricking Angle — 0°~83°
- Jib Length — 7.9m & 13.0m
- Jib Off-set Angle — 5°, 25°, 45°
- Maximum Lifting Height — 31.2m (Boom)  
44.8m (Jib)



## Outrigger Width

## Comfortable operator's cab for the Professional Works

New ACS Moment Limiter Compuload (MS-200) with outrigger width detector and working range limiting function



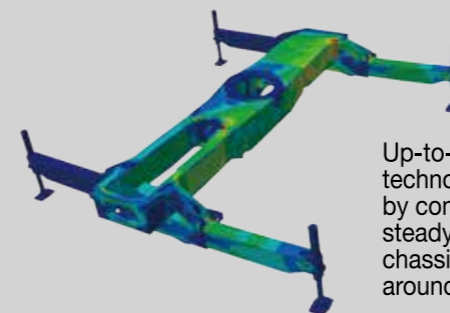
- Easy touch panel operation
- High quality color display
- Working range limiting function

- Big size new cluster meter
- Air duct (option)
- Durable switches

- Joystick control levers
- Fatigue free adjustable seat



## Safe and Steady



Up-to-dated design technologies assisted by computer assure steady and rigid chassis frame while all around lifting works.



Making front view wider and assuring more safety at travelling with lower position of boom foot pin and smaller front overhang.