

SR-700L

KATO



SR-700L

Rough Terrain Crane

Maximum rated lifting capacity: 70t × 2.5m
Maximum boom length: 44.5m
Engine output: 257kW / 2,200min⁻¹ (ISO Net)



Address inquiries to :

<http://www.kato-works.co.jp>

NOTE : Illustrations may include optional equipment. KATO products and specifications are subject to improvements and changes without notice.



**QUALITY & EXPERIENCE
SINCE 1895**

KATO WORKS CO.,LTD.

9-37, Higashi-ohi 1-chome, Shinagawa-ku, Tokyo 140-0011 Japan.
Tel. : Head Office Tokyo(03)3458-1111
Overseas Marketing Department Tokyo(03)3458-1115
Fax. : Tokyo(03)3458-1163

C02641
10.2008-3000(AT)1
4.2014-800(SY)1-6-2 Printed in Japan

Innovations For The Future

KATO WORKS CO.,LTD.

Powerful & Reliable 6 section SUPERBOOM and 2 section SL jib

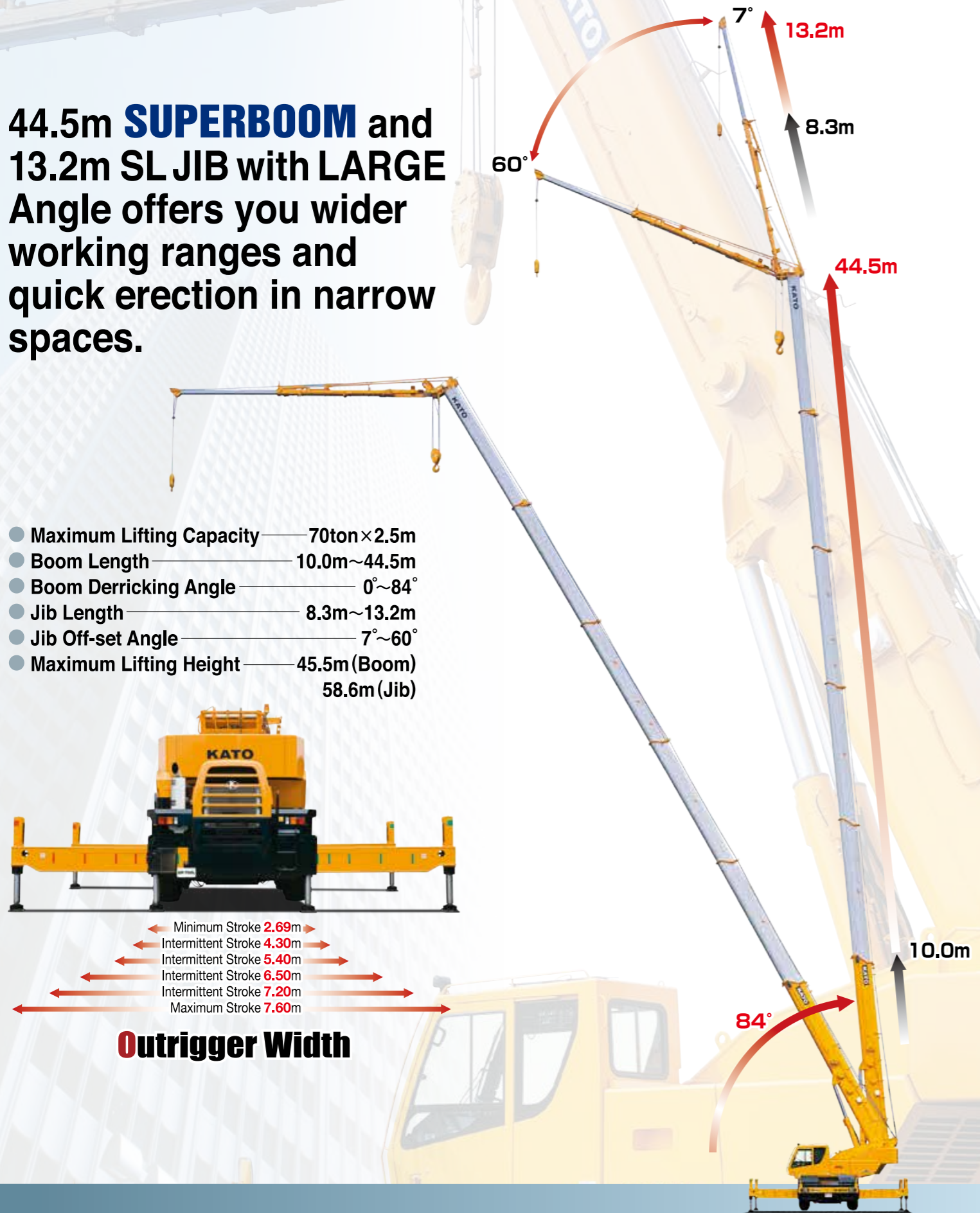
44.5m **SUPERBOOM** and 13.2m SL JIB with **LARGE** Angle offers you wider working ranges and quick erection in narrow spaces.

- Maximum Lifting Capacity — 70ton×2.5m
- Boom Length — 10.0m~44.5m
- Boom Derricking Angle — 0°~84°
- Jib Length — 8.3m~13.2m
- Jib Off-set Angle — 7°~60°
- Maximum Lifting Height — 45.5m (Boom)
58.6m (Jib)



- ← Minimum Stroke 2.69m →
- ← Intermittent Stroke 4.30m →
- ← Intermittent Stroke 5.40m →
- ← Intermittent Stroke 6.50m →
- ← Intermittent Stroke 7.20m →
- ← Maximum Stroke 7.60m →

Outrigger Width



Comfortable operator's cab for the Professional Works

New ACS Moment Limiter Compuload (MS-200) with outrigger width detector and working range limiting function.



- Easy touch panel operation
- High quality color display
- Working range limiting function



- Joystick control levers
- Fatigue free adjustable seat

- Big size new cluster meter
- Durable switches
- Air duct (option)

Super Luffing

(Power operated extendable & Luffing Jib)

Extra lower gravity offers great driving stability

